

Comune di Venezia

**PIANO DI LOTTIZZAZIONE DI INIZIATIVA PRIVATA
IN Z.T.O. "ATTREZZATURE ECONOMICHE VARIE- D4b-10"
COMPARTO "C" LOCALITA' DESE-NORD**

Sezione Favaro Veneto - Foglio 3
Mappali 629-631-576-627-239-620-623-625-626-630-573-621-624-626-214-306-572-632-635-634
Arch. Massimo Bertagna Arch. Carlotta Bevilacqua Arch. Sara Scaggiante
C.F. BRT MSM 71P14 L7960 C.F. BVL CLT 72L51 L798U C.F. SCG SRA 78852 L7966

Recapito: via Rondina n° 1448, 30174 Mestre VE tel. 041 957048 fax 041 2394612

Proprietari delle aree

S.I.V.E.C.I.S.S. s.r.l.

Salviato Lino

Venice Properties R.E. S.r.l.

Gamba Sergio

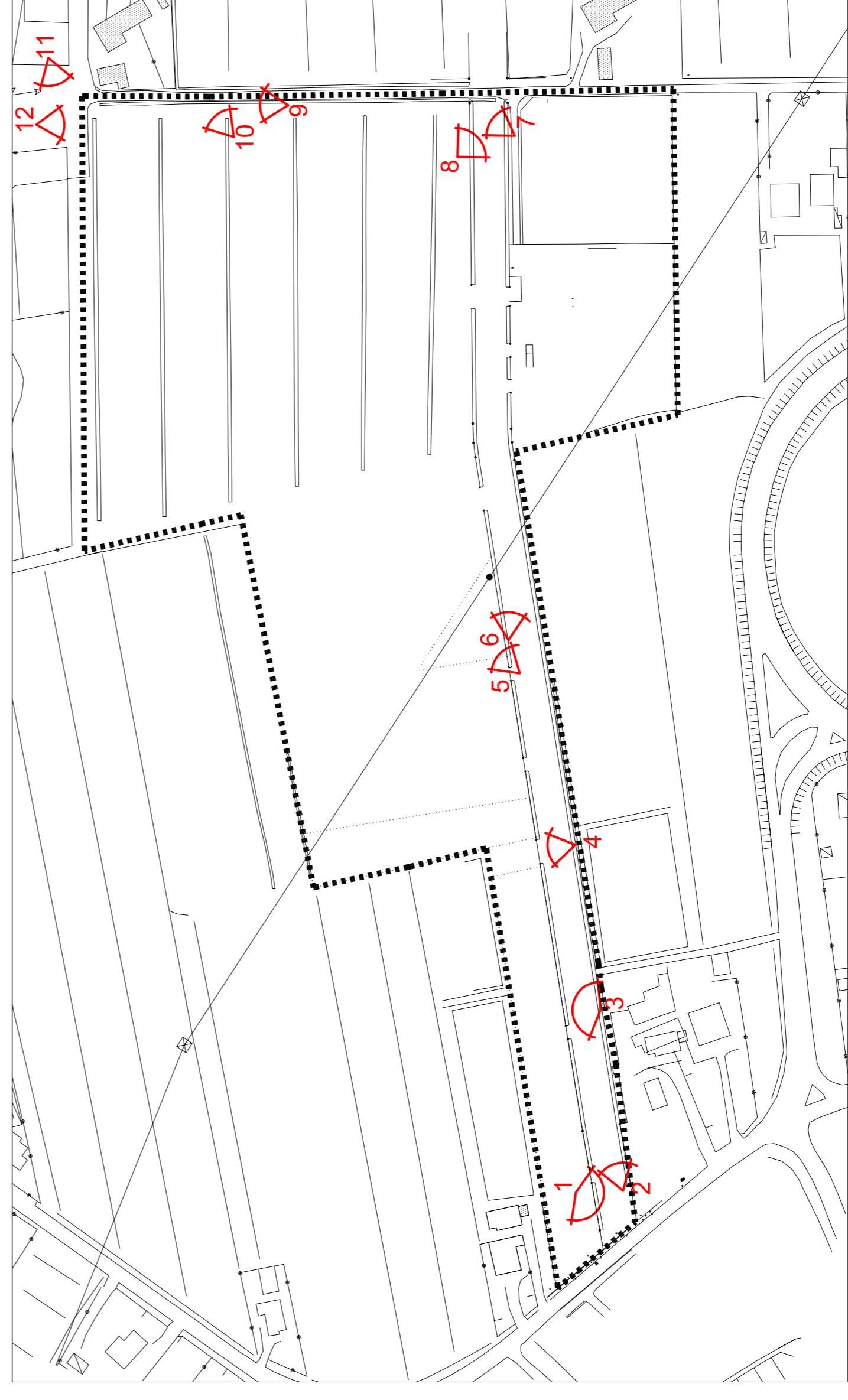


Documentazione
Fotografica

1:2000

Luglio 2014

3



CONI VISUALI scala 1:2000



FOTO 1

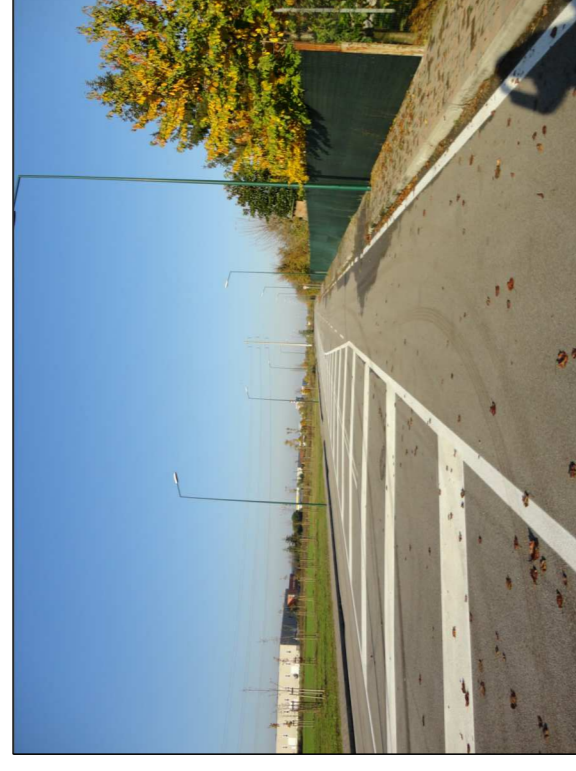


FOTO 2

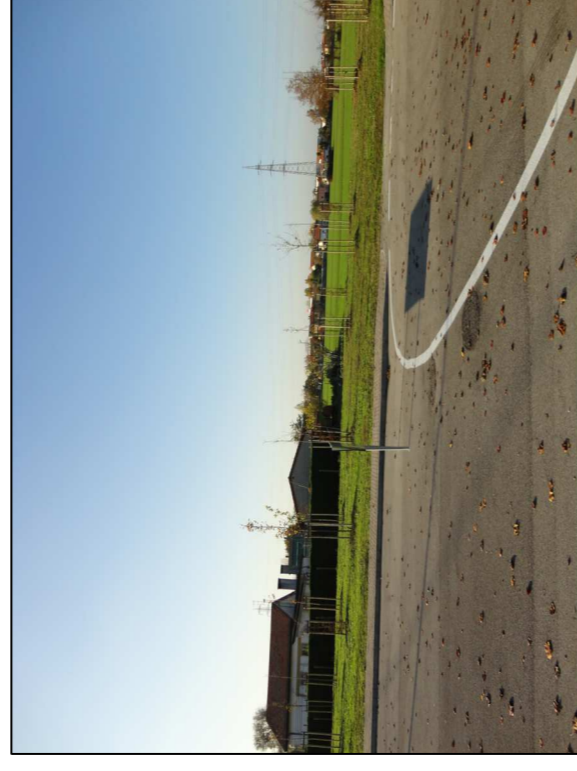


FOTO 3



FOTO 4

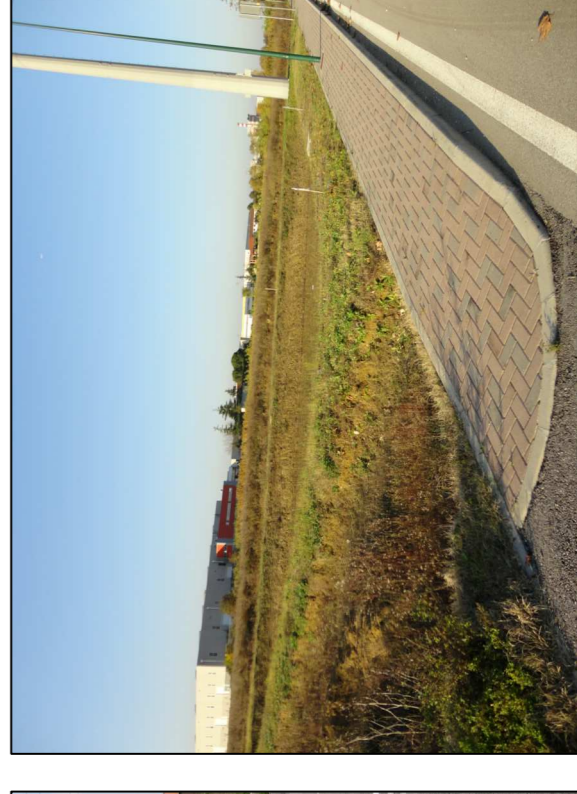


FOTO 5

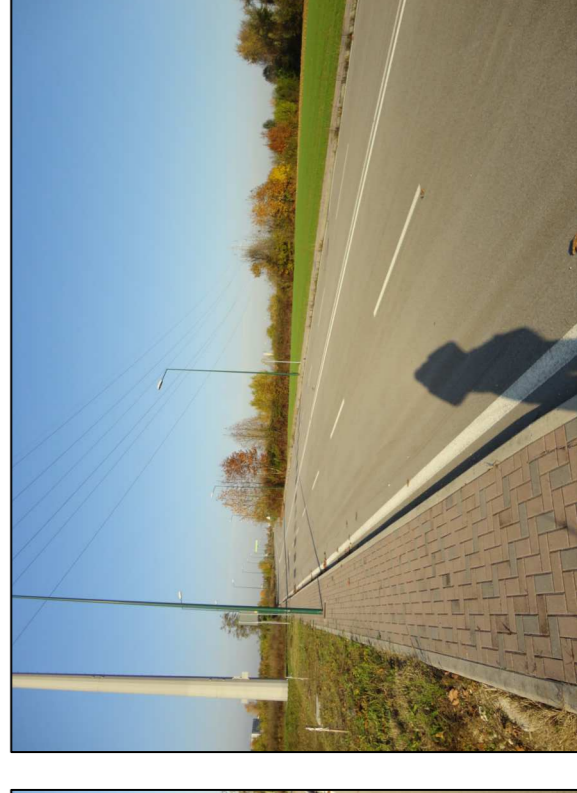


FOTO 6

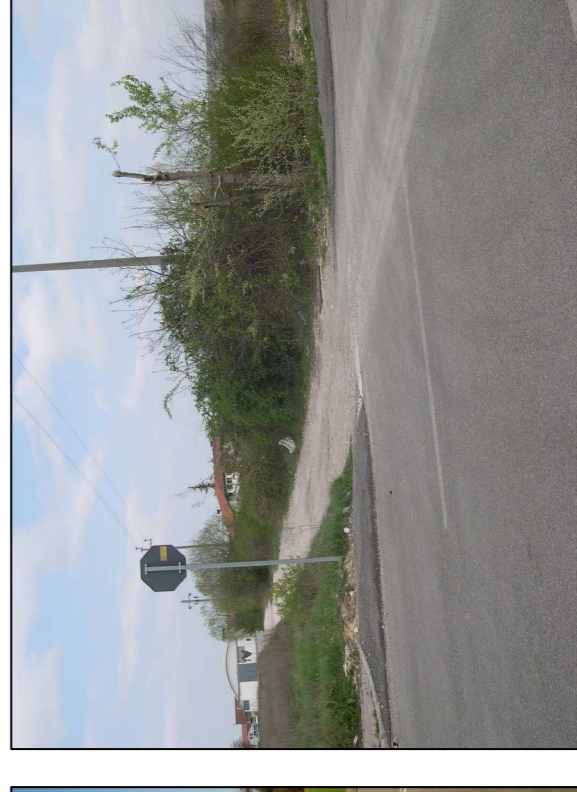


FOTO 7



FOTO 8

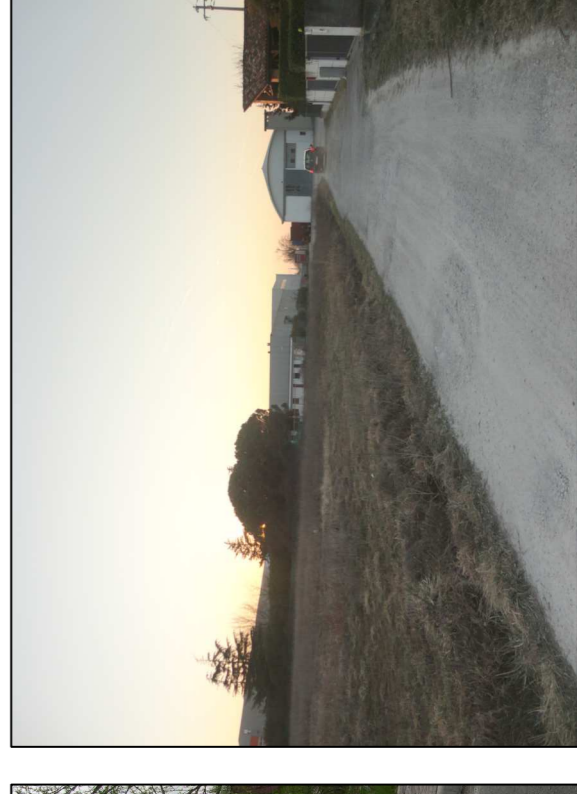


FOTO 9



FOTO 10

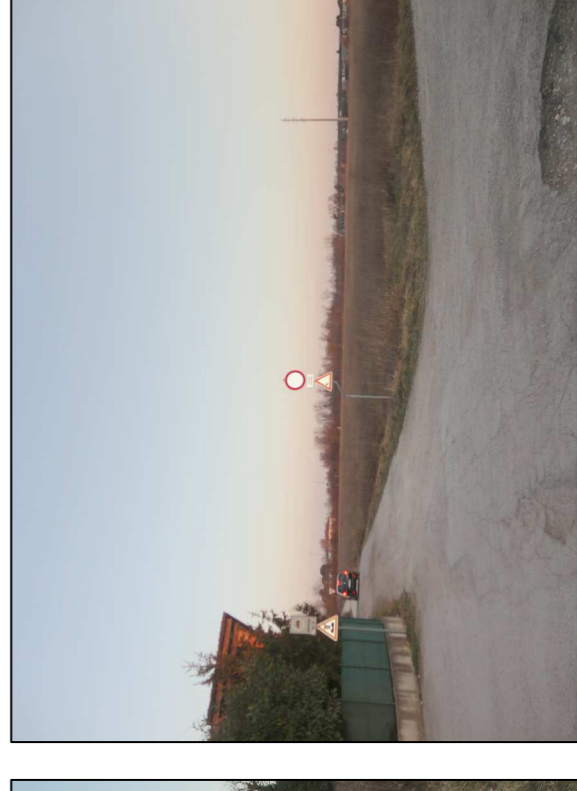


FOTO 11



FOTO 12

