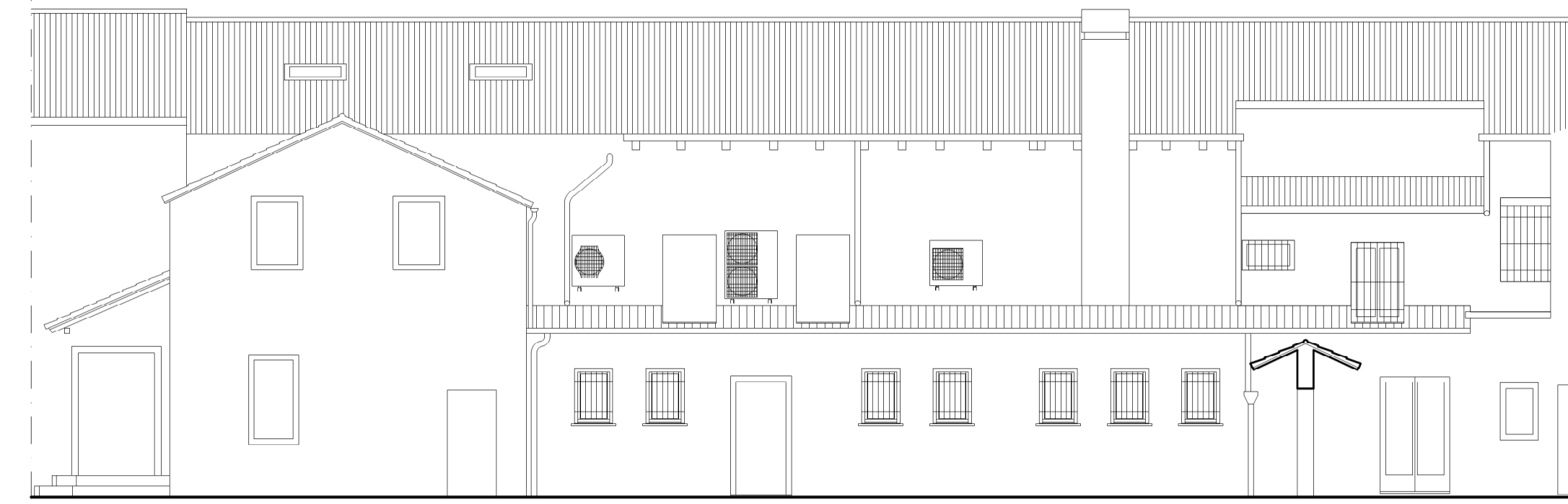
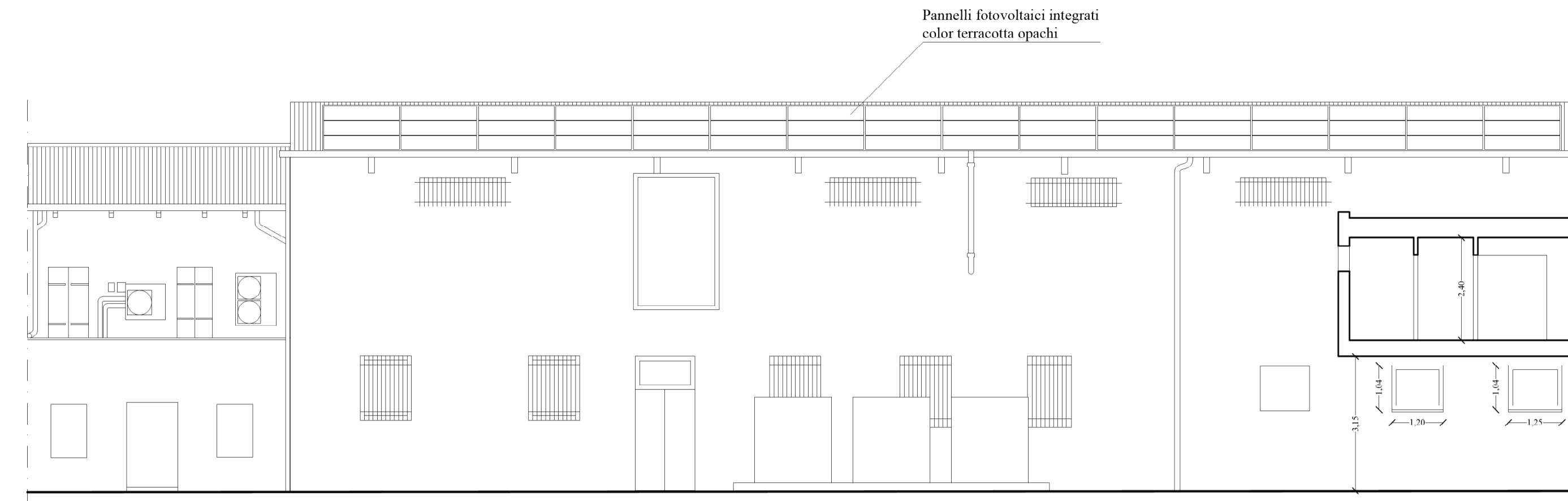




PROSPETTO FONDAMENTA NAVAGERO



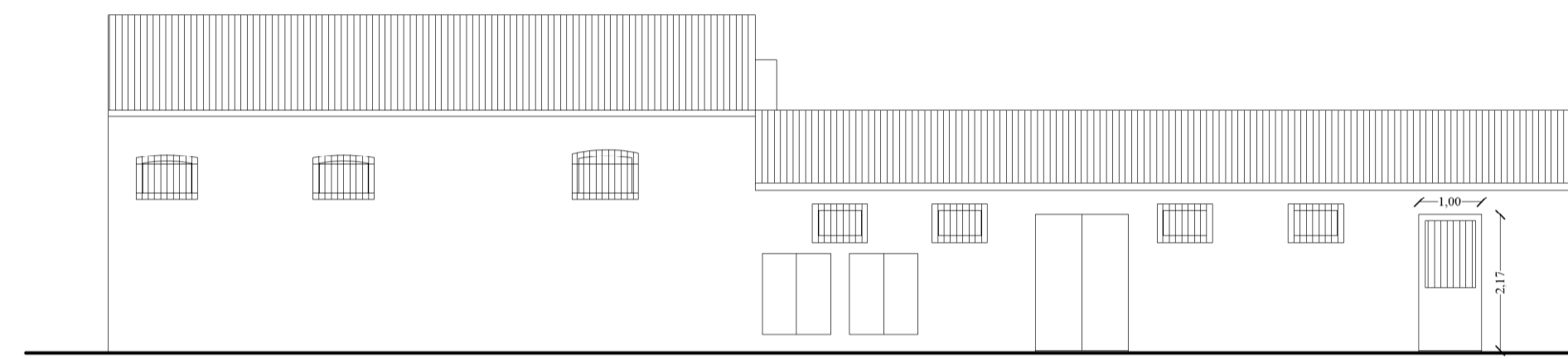
PROSPETTO SU SCOPERTO D



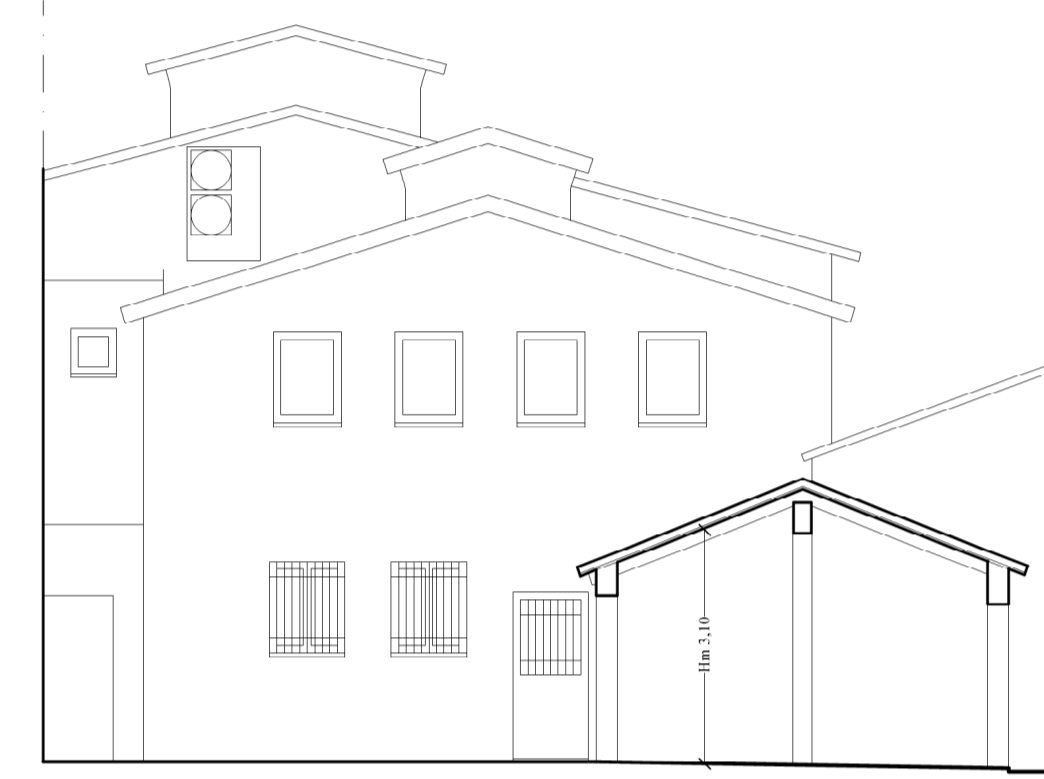
PROSPETTO SU SCOPERTO A



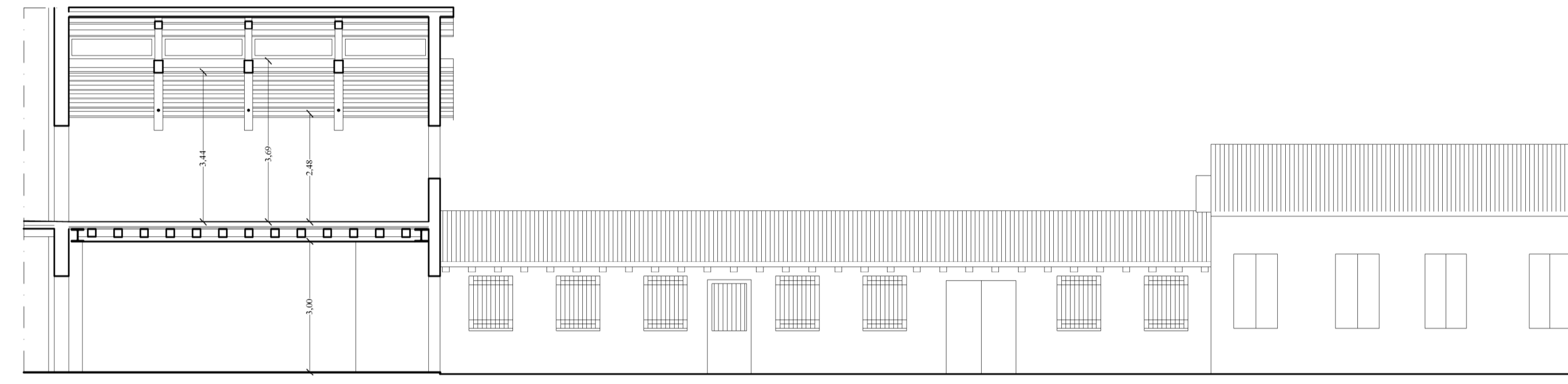
SEZIONE A - A'



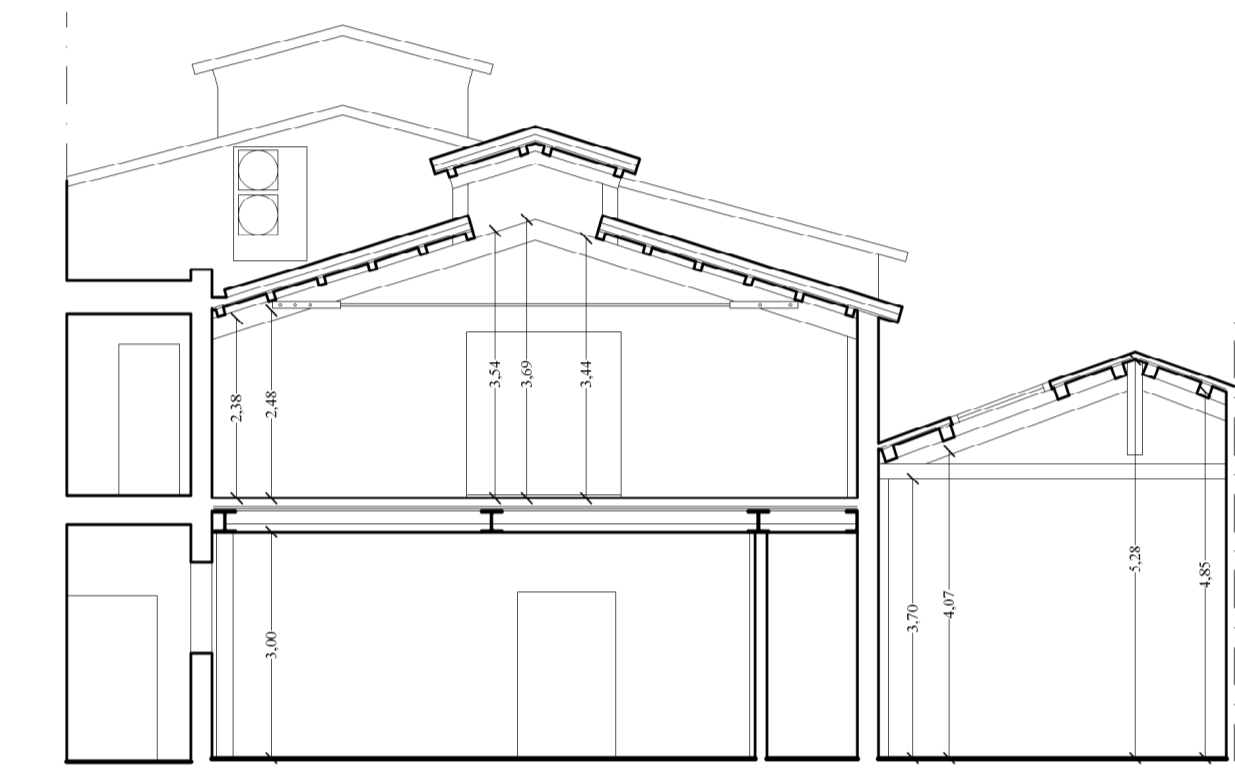
PROSPETTO SU CALLE PRIVATA



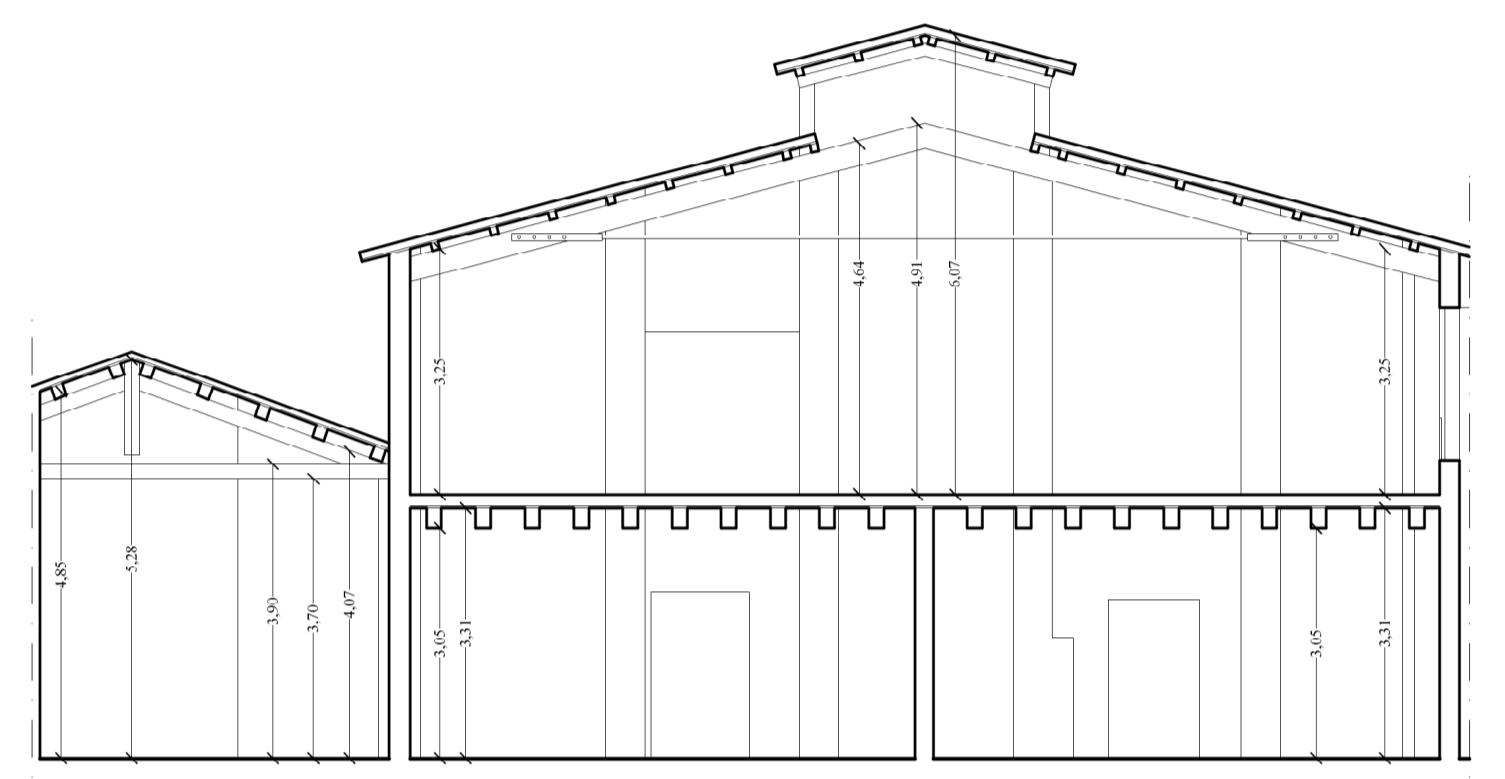
SEZIONE B - B'



SEZIONE C - C'



SEZIONE D - D'



SEZIONE E - E'

**STUDIO TECNICO FURLAN**  
Arch. Giancarlo Furlan  
Santa Croce 1711/1718 - 30135 - VENEZIA - Tel. 041/5223190 - email info@studiotecnicofurlan.it

IMMOBILI SITI A VENEZIA - MURANO  
Fondamenta Navagero 50 - 54/B  
Fig. 54 Mapp. 407 Sub. 2 - 3 - 4

Committente: **VETRERIA ESTEVAN ROSSETTO 1950 s.r.l.**  
Legale Rappresentante: **MESSINA LINO**

PROGETTO DI RISTRUTTURAZIONE EDILIZIA  
CON AMPLIAMENTO

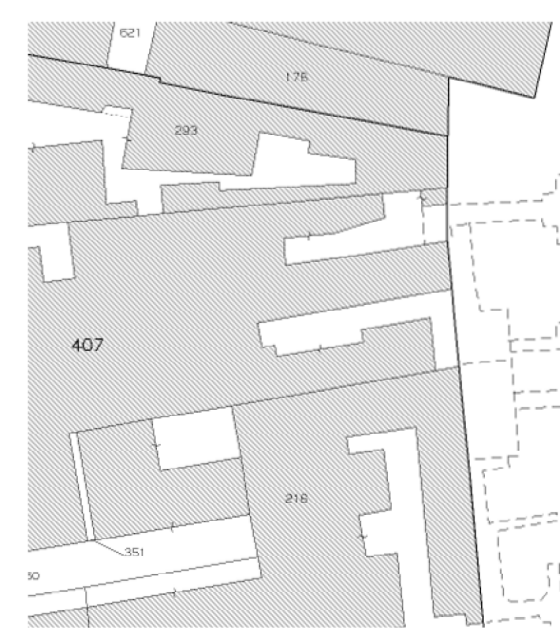
**P7**

STATO AUTORIZZATO  
(S.C.I.A. Prot. n°157348 del 31/03/2023)

PROSPETTI E SEZIONI

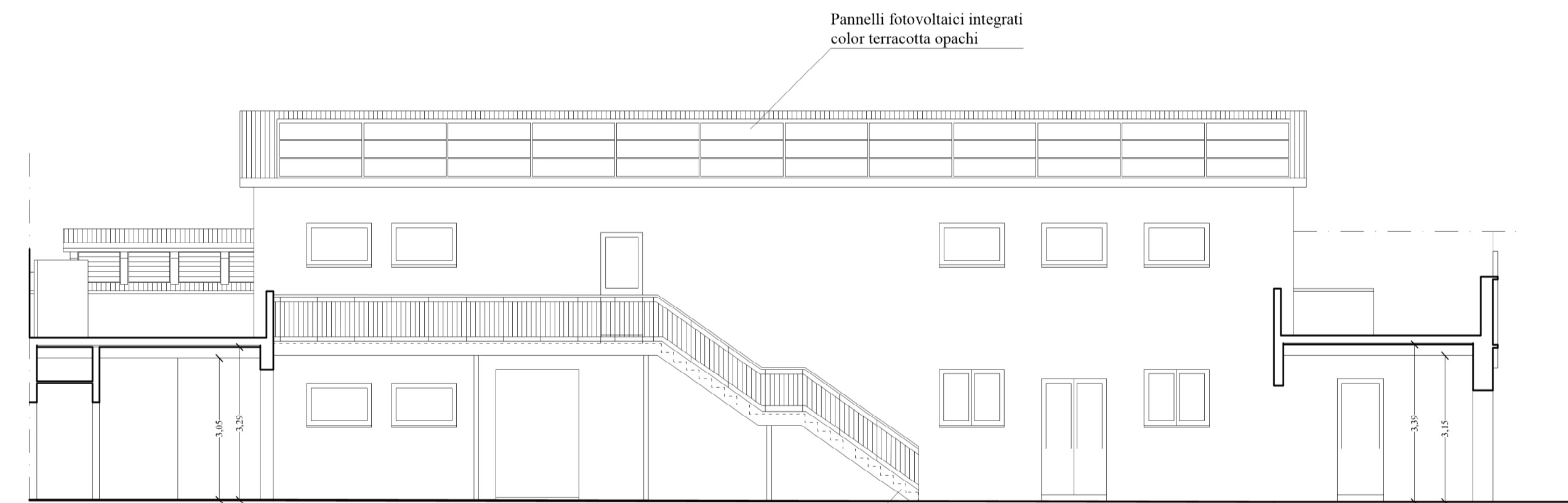
Scala 1:100

**N°3d**

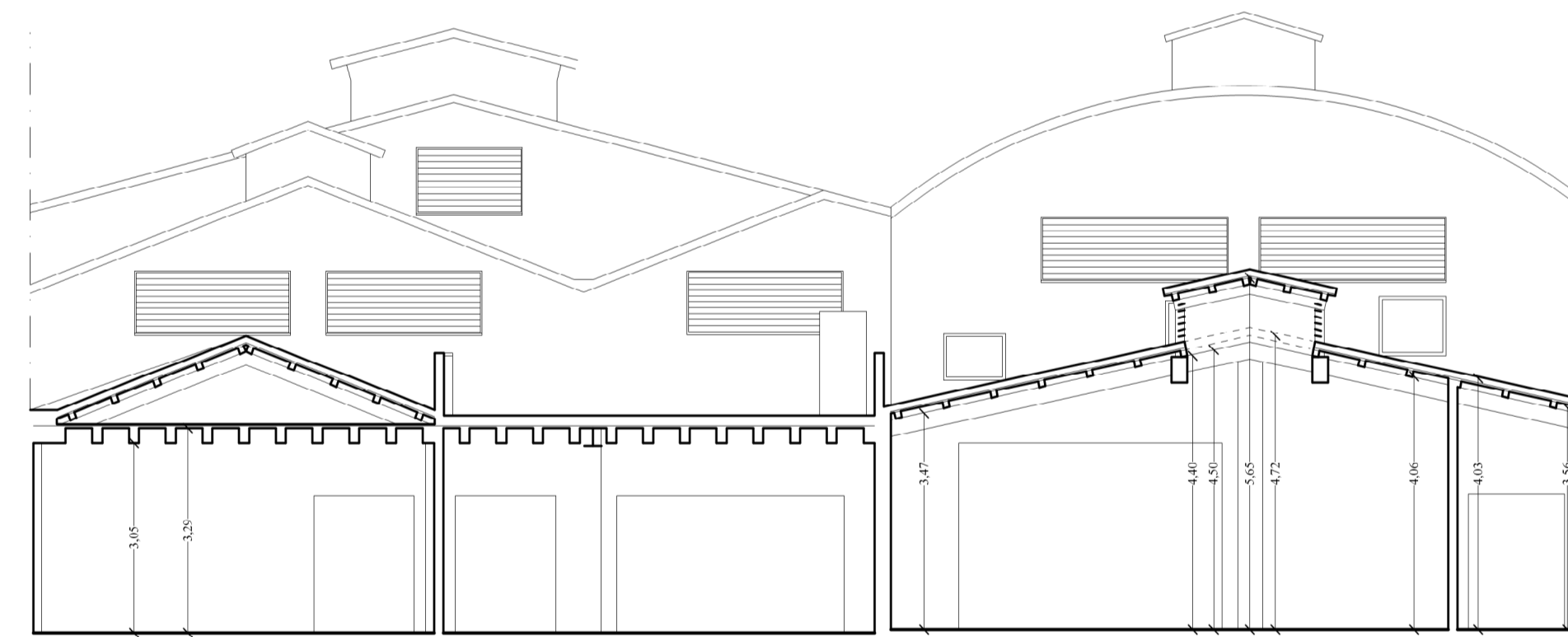


Estratto Mappa Scala 1:1000

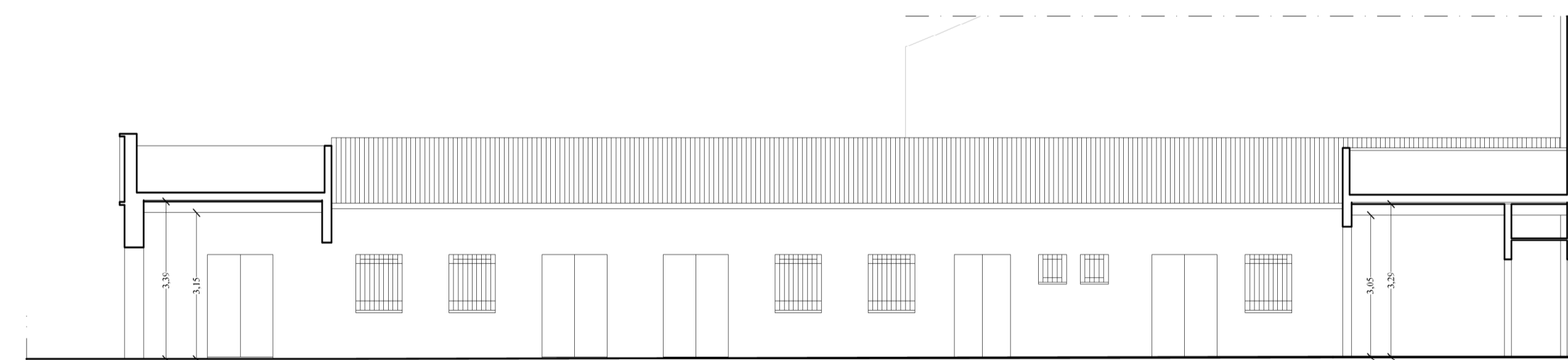
Luglio 2024



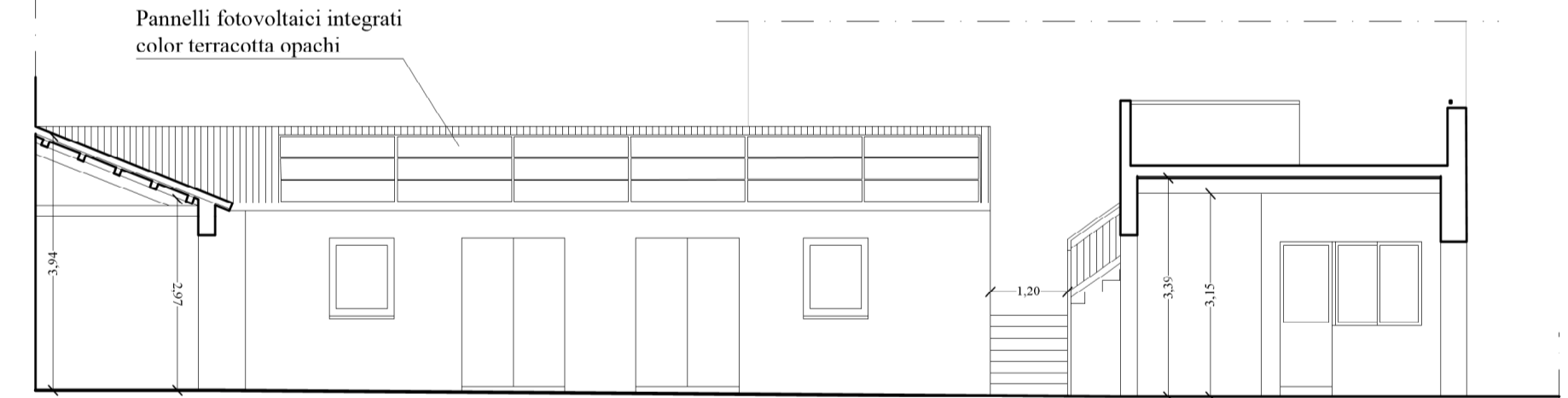
PROSPETTO SU SCOPERTO C



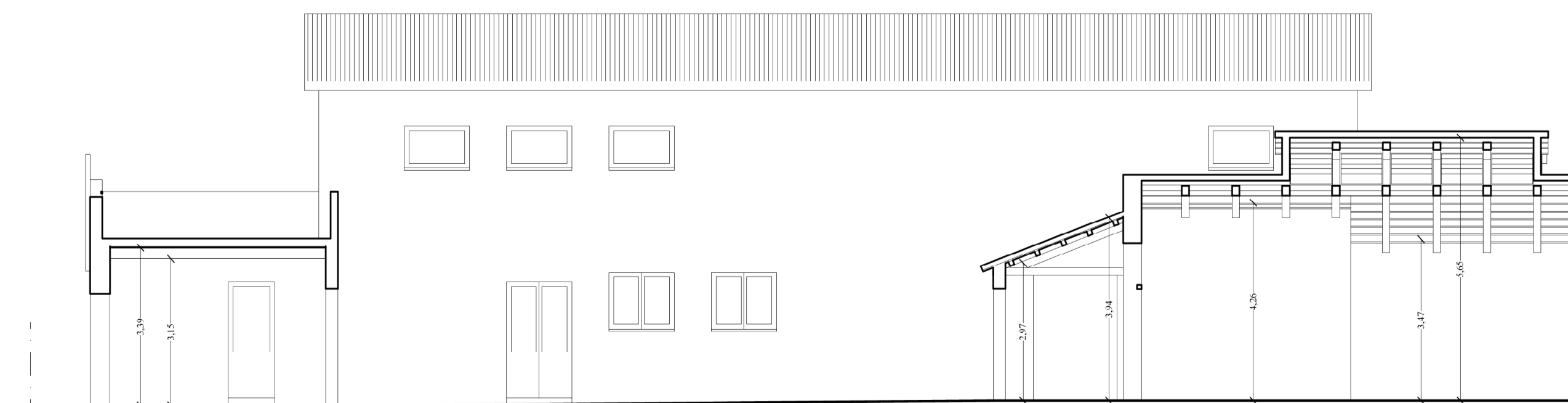
SEZIONE F - F'



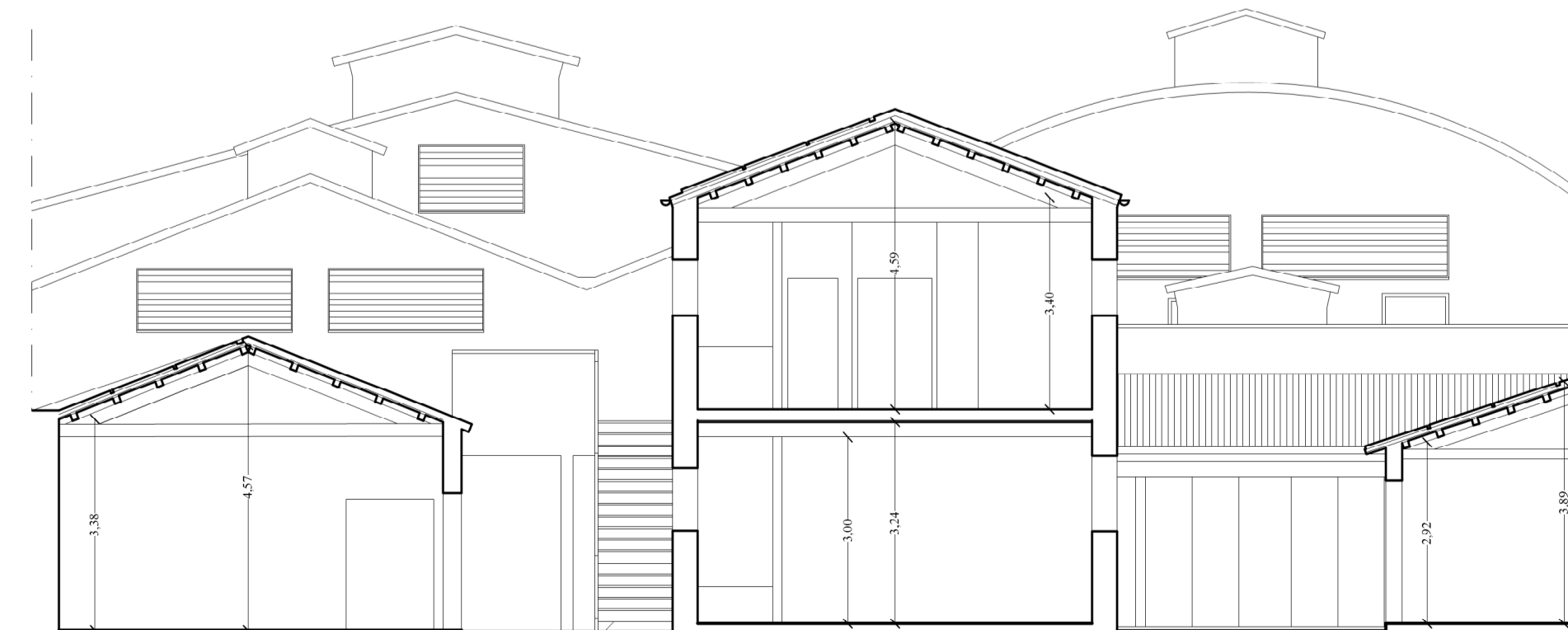
PROSPETTO SU SCOPERTO C



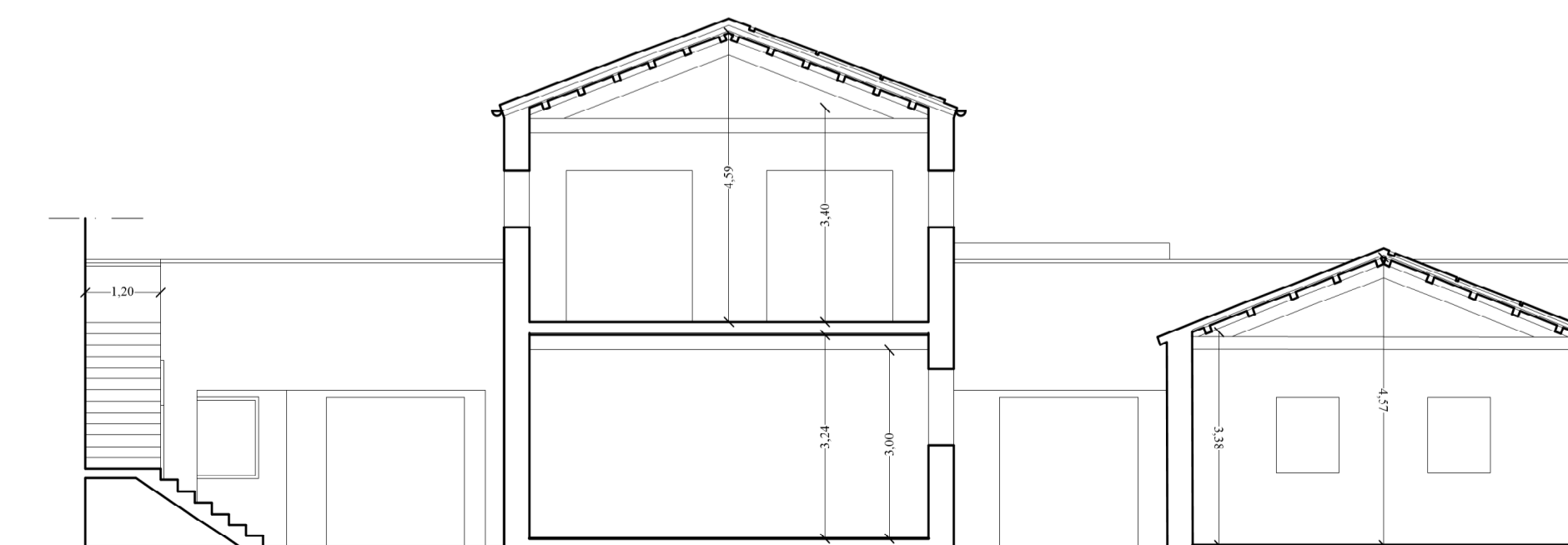
SEZIONE G - G'



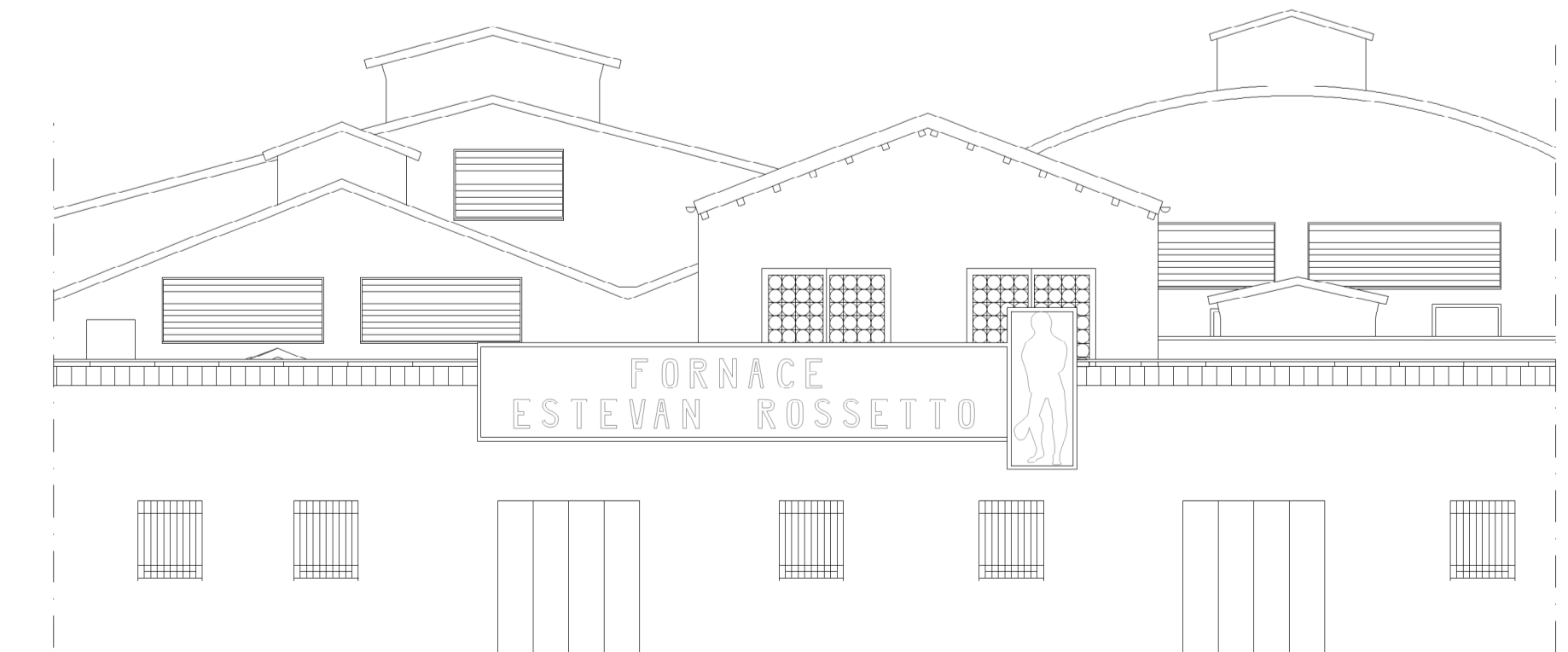
PROSPETTO SU SCOPERTO B



SEZIONE H - H'



SEZIONE I - I'



PROSPETTO SU CANALE ONDELLO