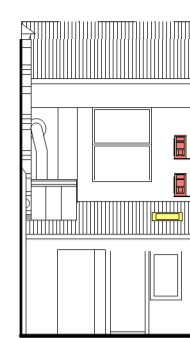
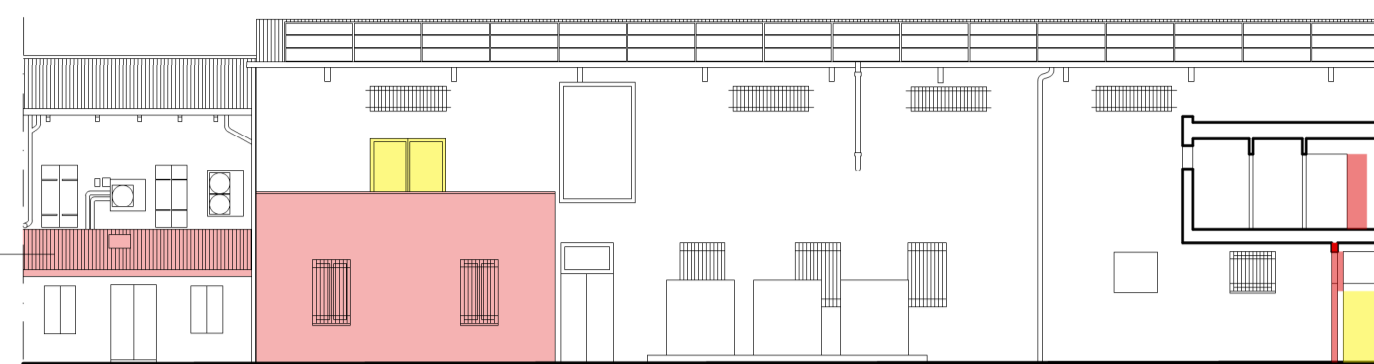


SEZIONE L - L'

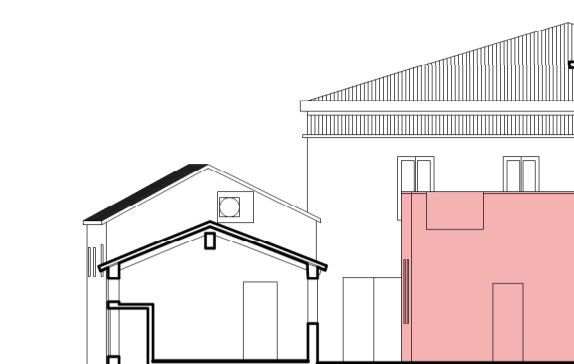


PROSPETTO
SU SCOPERTO D

Mantenimento
copertura esistente

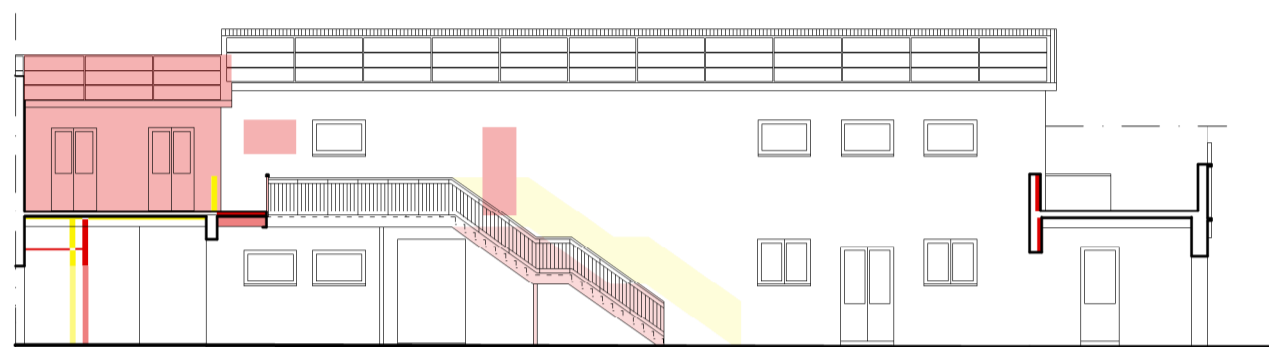


PROSPETTO SU SCOPERTO A

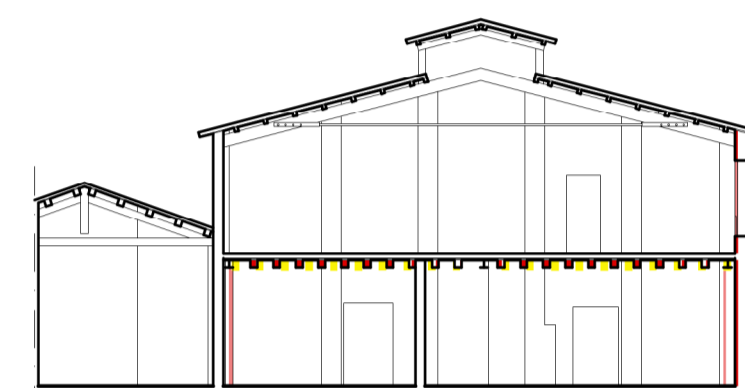


SEZIONE A - A'

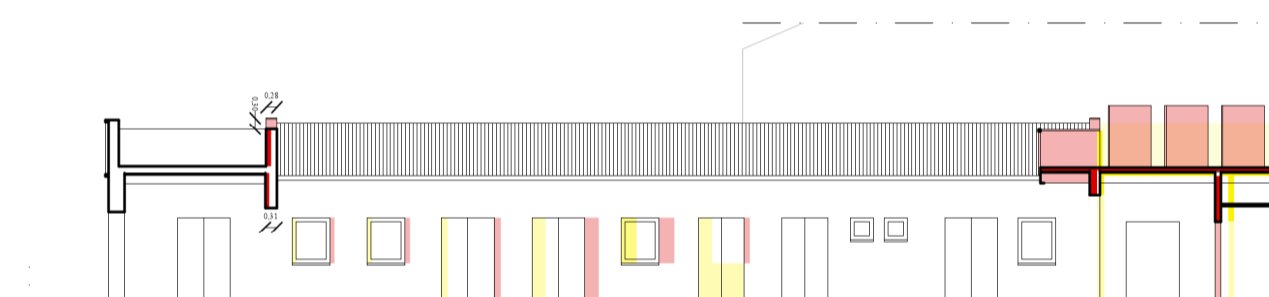
■ DEMOLIZIONI
■ COSTRUZIONI



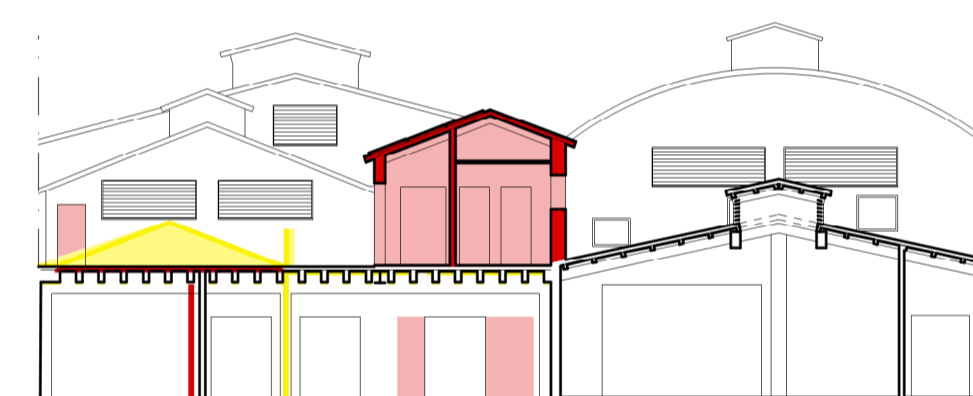
PROSPETTO SU SCOPERTO C



SEZIONE E - E'



PROSPETTO SU SCOPERTO C



SEZIONE F - F'

STUDIO TECNICO FURLAN
Arch. Giancarlo Furlan

Santa Croce 1711/1718 - 30135 - VENEZIA - Tel. 041/5223190 - email info@studiotecnicofurlan.it

IMMOBILI SITI A VENEZIA - MURANO

Fondamenta Navagero 50 - 54/B

Fg. 54 Mapp. 407 Sub. 2 - 3 - 4

Committente: **VETRERIA ESTEVAN ROSSETTO 1950 s.r.l.**

Legale Rappresentante: **MESSINA LINO**

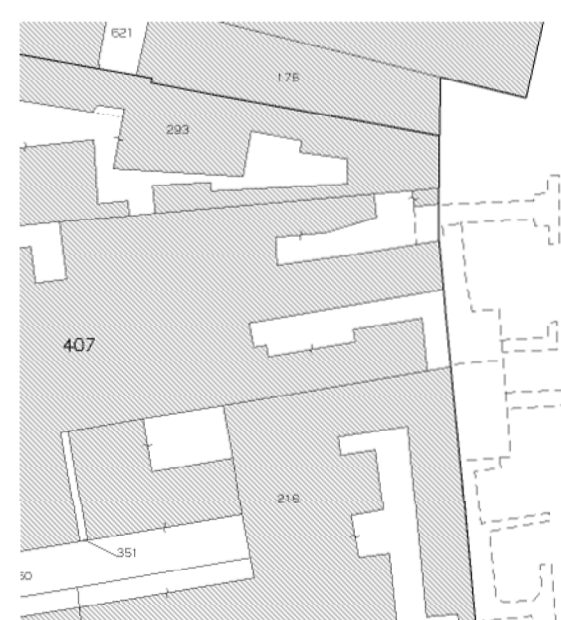
**PROGETTO DI RISTRUTTURAZIONE EDILIZIA
CON AMPLIAMENTO**

P7

COMPARATIVA
PROSPETTI E SEZIONI

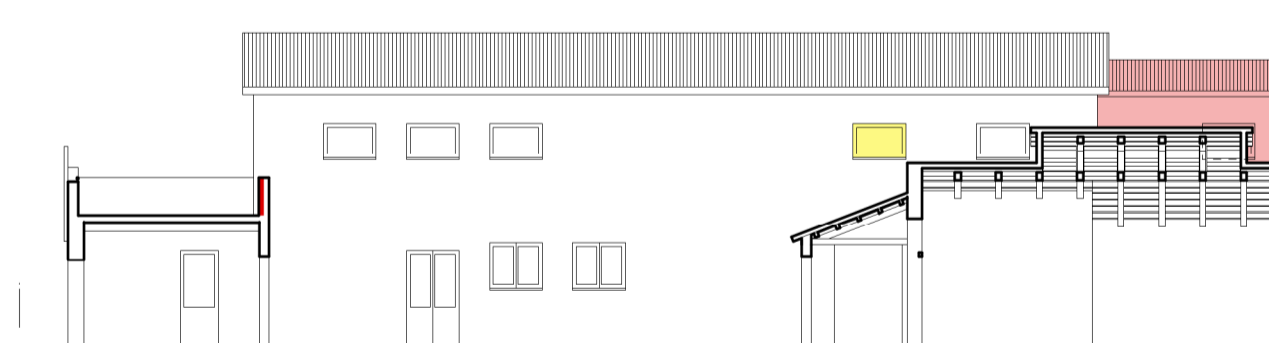
Scala 1:200

N°8d

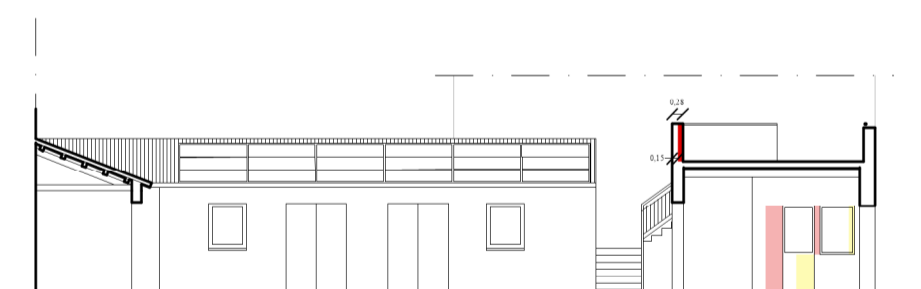


Estratto Mappa Scala 1:1000

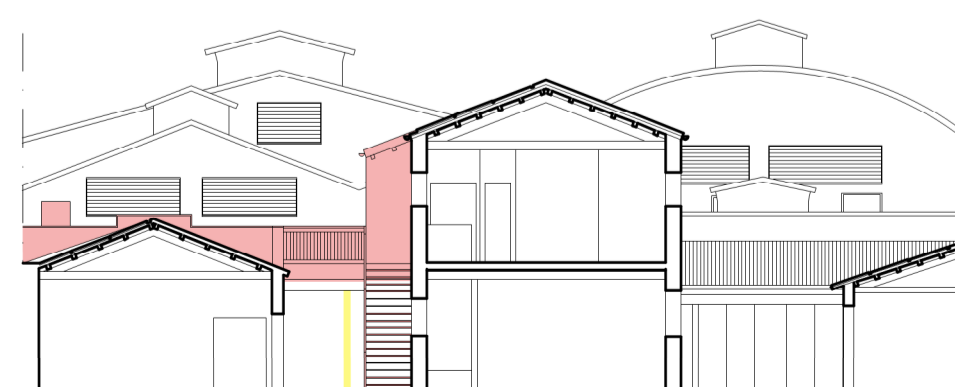
Luglio 2024



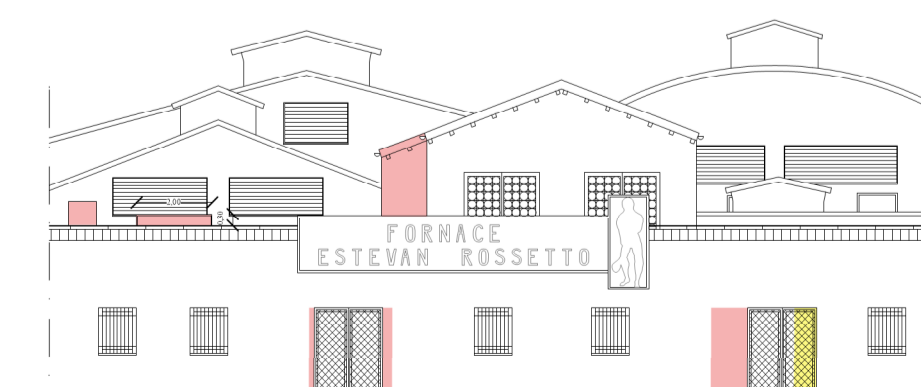
PROSPETTO SU SCOPERTO B



SEZIONE G - G'



SEZIONE H - H'



PROSPETTO SU CANALE ONDELLO