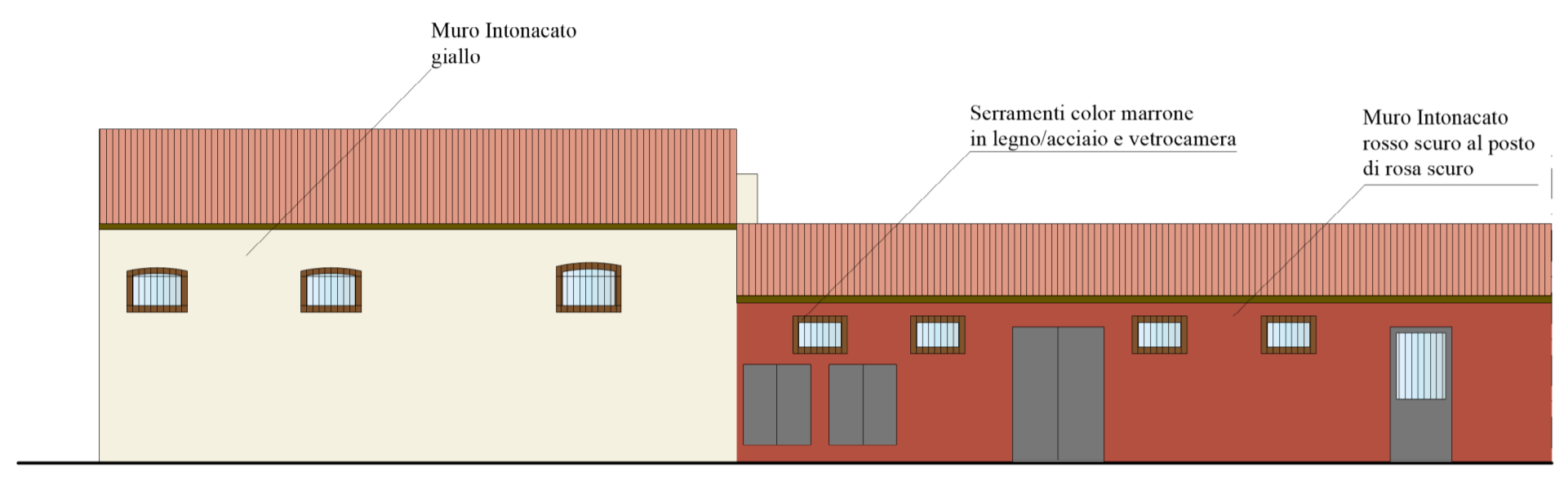
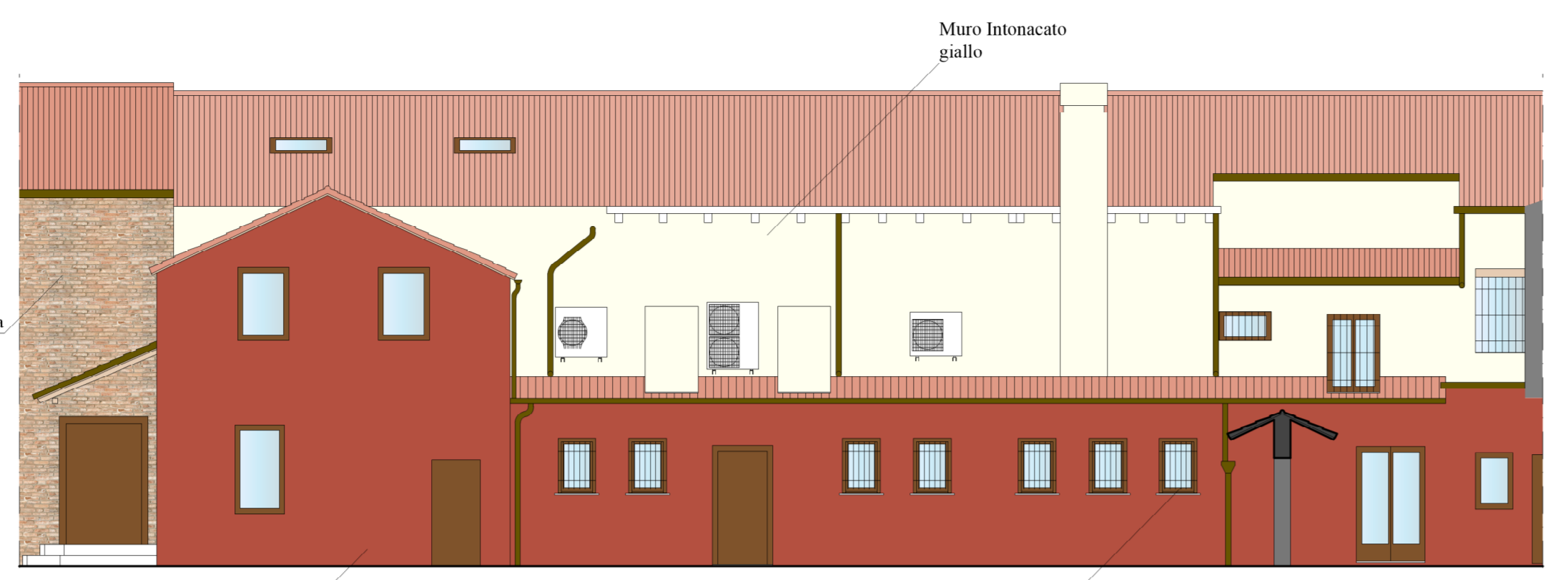


PROSPETTO FONDAMENTA NAVAGERO



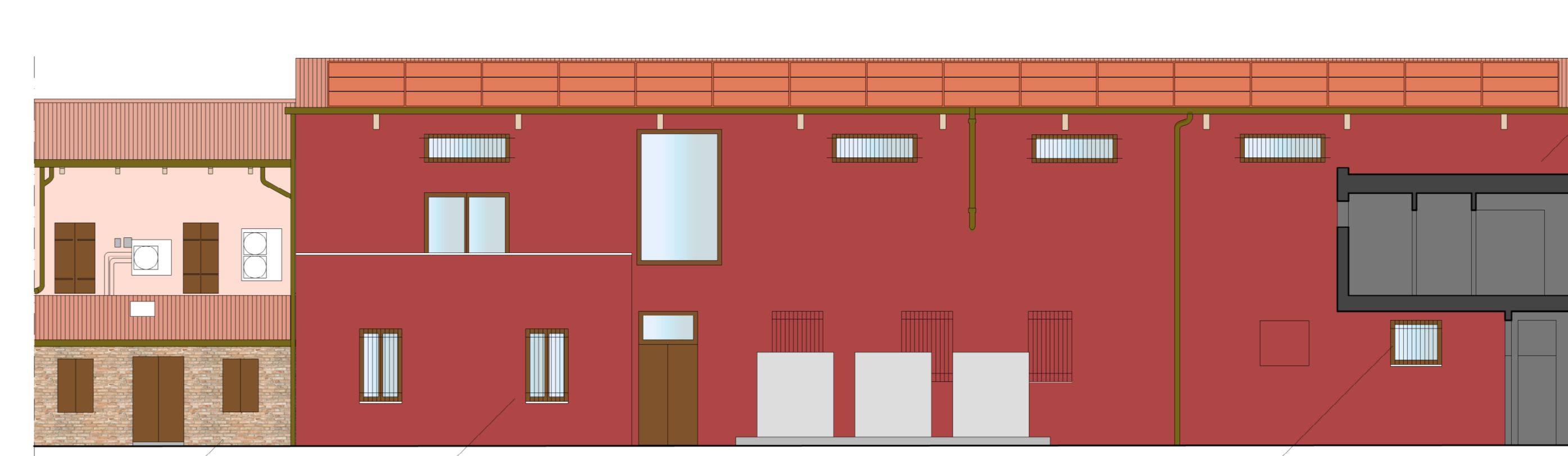
PROSPETTO SU CALLE PRIVATA



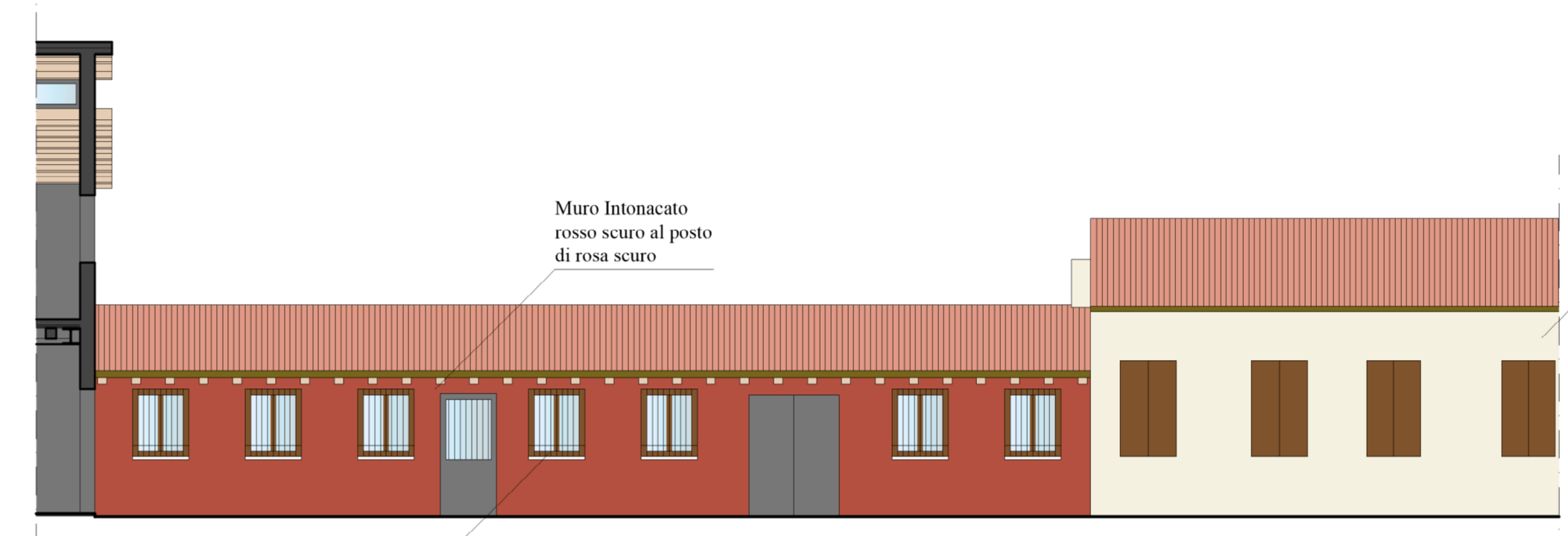
PROSPETTO SU SCOPERTO D



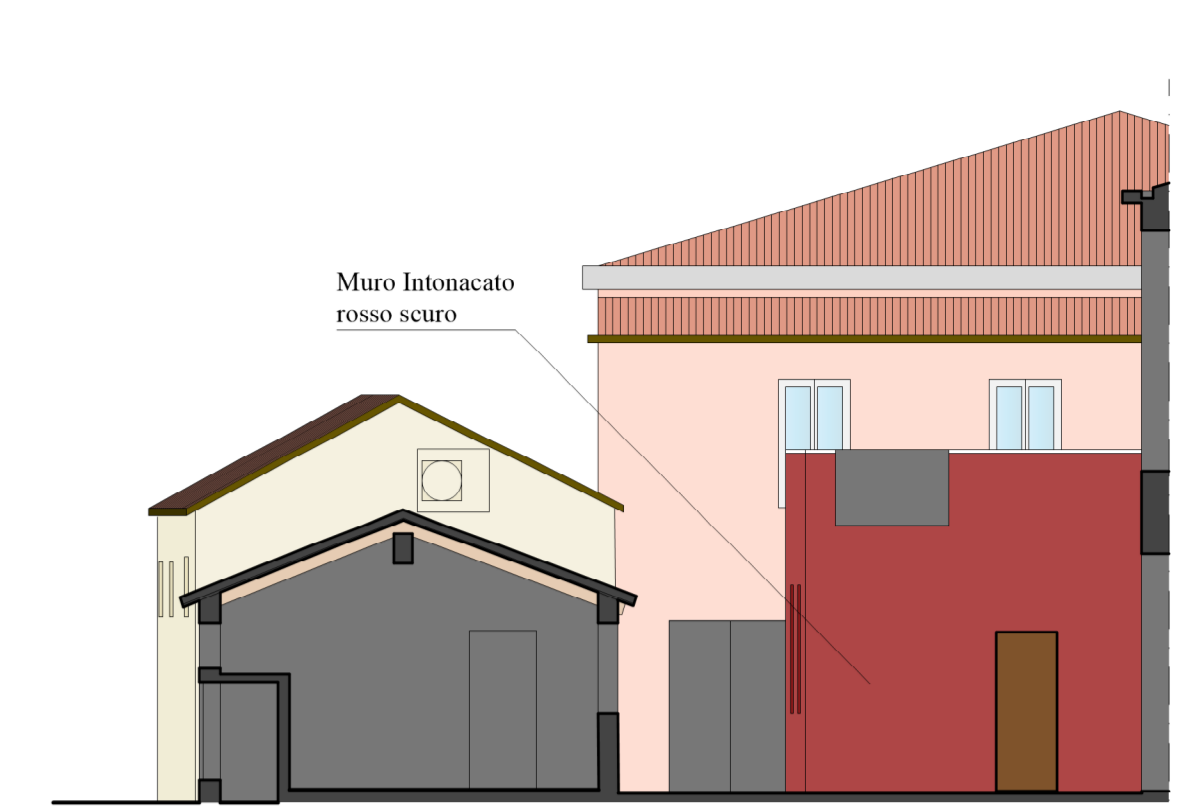
SEZIONE B - B'



PROSPETTO SU SCOPERTO A



SEZIONE C - C'



SEZIONE A - A'



SEZIONE G - G'

**STUDIO TECNICO FURLAN**  
 Arch. Giancarlo Furlan  
 Santa Croce 1711/1718 - 30135 - VENEZIA - Tel. 041/5223190 - email info@studiotecnicofurlan.it

---

IMMOBILI SITI A VENEZIA - MURANO  
 Fondamenta Navagero 50 - 54/B  
 Fig. 54 Mapp. 407 Sub. 2 - 3 - 4

---

Committente: **VETRERIA ESTEVAN ROSSETTO 1950 s.r.l.**  
 Legale Rappresentante: **MESSINA LINO**

---

**PROGETTO DI RISTRUTTURAZIONE EDILIZIA CON AMPLIAMENTO**

**P7**

---

**VARIANTE**  
 PROSPETTI E SEZIONI - Materiali di finitura

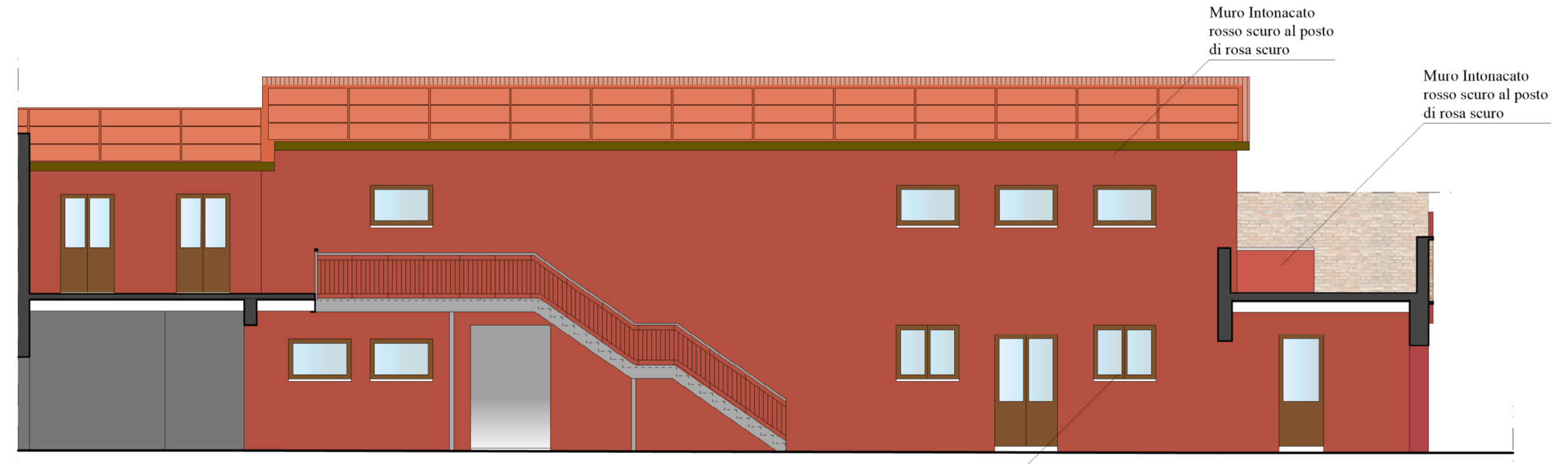
Scala 1:100

**N°9d**

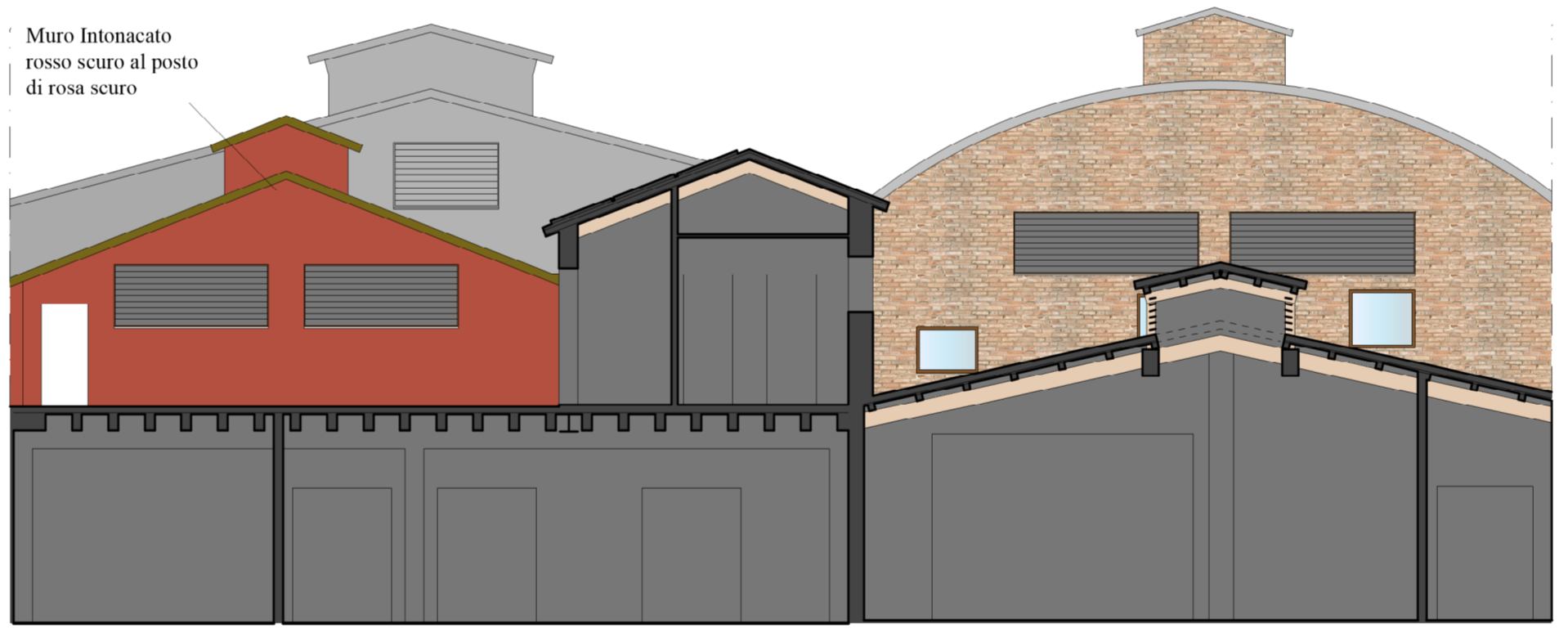
---

Estratto Mappa Scala 1:1000

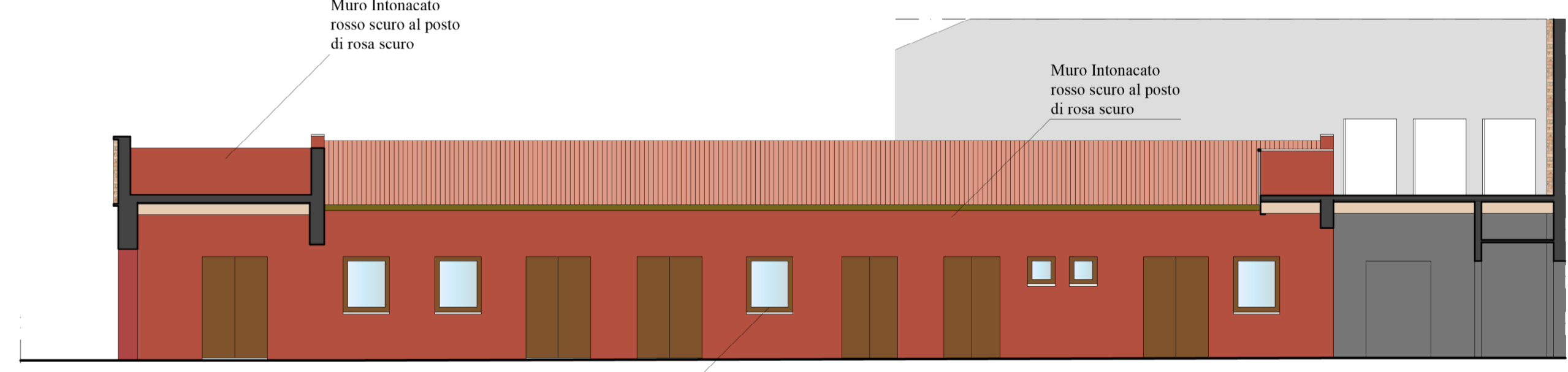
Luglio 2024



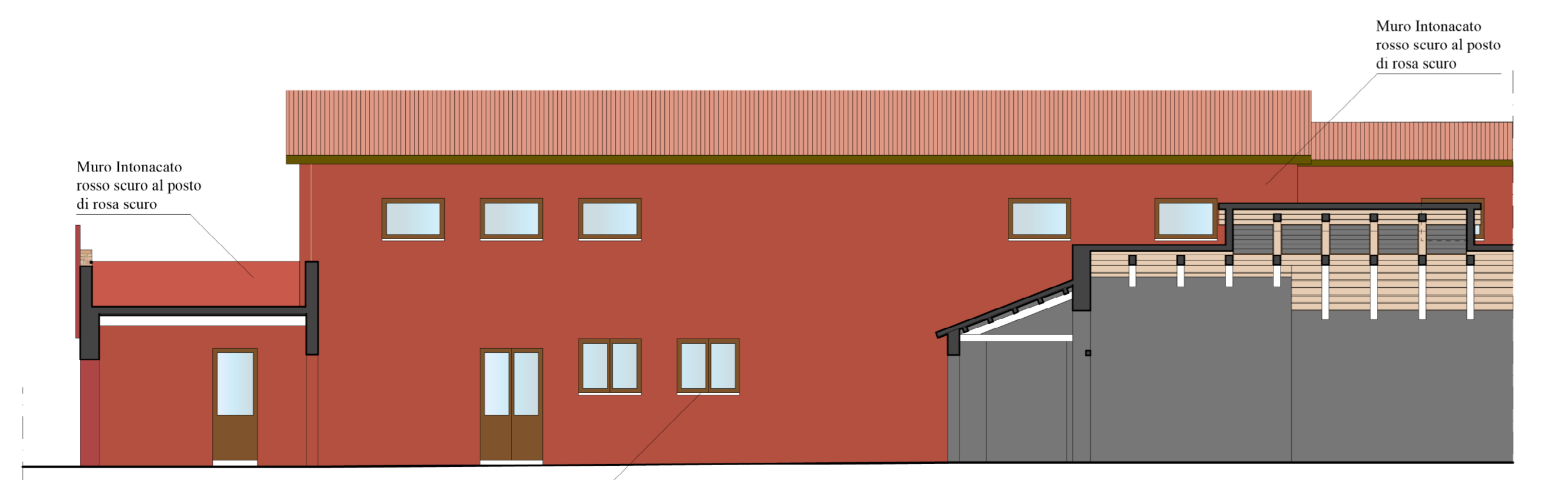
PROSPETTO SU SCOPERTO C



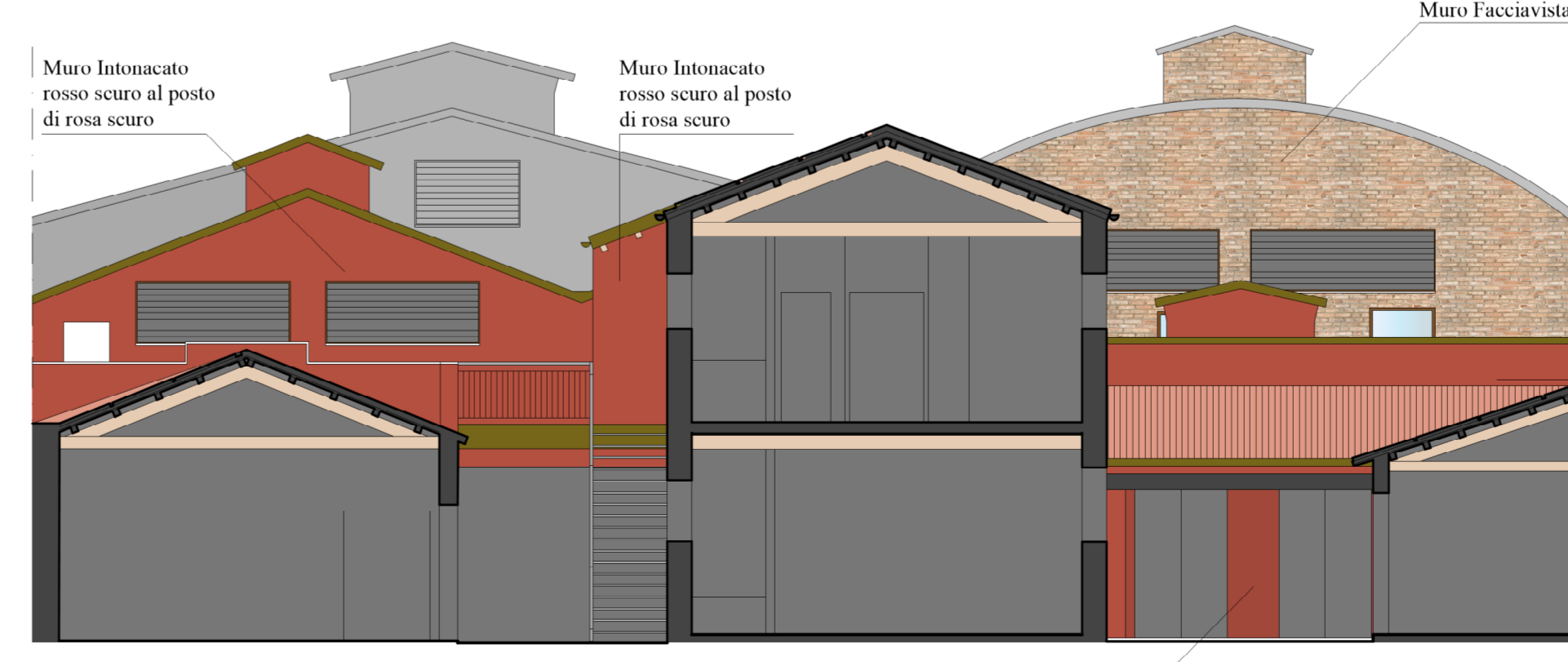
SEZIONE F - F'



PROSPETTO SU SCOPERTO C



PROSPETTO SU SCOPERTO B



SEZIONE H - H'



PROSPETTO SU CANALE ONDELLO